

ADIRONDACK RAIL TRAIL

Remsen-Lake Placid Travel Corridor

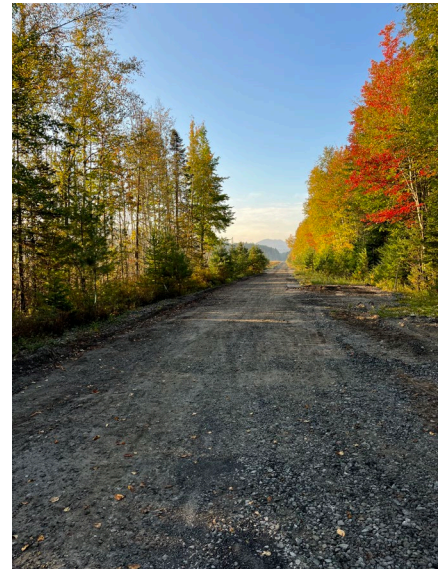


Department of
Environmental
Conservation

The Adirondack Rail Trail is a 34-mile trail stretching from Lake Placid to Tupper Lake and is part of the greater Remsen-Lake Placid Travel Corridor. The Adirondack Rail Trail is owned and managed by New York State Department of Environmental Conservation (NYSDEC).

History of the 119-Mile Travel Corridor

- The corridor follows the path of a once-thriving rail line constructed in 1892 and operated continuously until 1972.
- The line and its right-of-way were purchased by New York State (NYS) in 1974.
- From 1977 – 1991, the Adirondack Railway Corporation leased the corridor then went bankrupt; NYS retained ownership throughout but regained operational control in 1991.
- NYS Department of Transportation had jurisdiction of the entire 119-mile corridor until 2022.
- In 2022, a 34-mile stretch from Lake Placid to Tupper Lake was transferred to DEC for creation of a rail trail through removal of the tracks and regrading of the surface.



View South From Fowler's Crossing

Did you know?

- Some of the original mile markers, whistle posts, and other historic remnants of the railroad remain along the trail.
- The Saranac Lake Station, Union Depot, was built in 1904 and is the only Depot along the Adirondack Rail Trail that is owned by NYSDEC.
- More of the original railroad remains than was removed; the trail will be a 34-mile path while the corridor from Tupper Lake to Remsen remains a functioning railway.
- NYSDEC facilitated the Adirondack Rail Trail Stakeholder group, which met from 2016 – 2019. This group represented regional businesses, non-profit organizations, municipalities, and State agencies and provided substantial input that directly informed the Unit Management Plan (UMP) for the Corridor.
- The Signage and Historic Preservation Subcommittee (S&HP), within the Stakeholder Group, worked with a historical consulting company, Morton Archaeological Research Services, to develop the historical preservation plan that resulted in guidelines for interpretive signage and educational content. These signs and content are currently under development and are expected to be installed along the trail between fall 2025 and spring 2026.

- Historical remnants maintained.
- Remaining railway longer than in-construction trail.
- Stakeholder involvement heavily informed the final plans.

Construction Phases and Anticipated Timeline

	Phase 1	Phase 2	Phase 3
Section of Trail	Lake Placid to Saranac Lake; 9.9 miles	Saranac Lake to Floodwood Road; 15.3 miles	Floodwood Road to Tupper Lake; 8.5 miles
Construction Dates	Officially opened as of Dec. 1, 2023	Summer 2023 – Fall 2024	Summer 2024 – Fall 2025 with pause during winter season
Seasonal Dates	Snowmobile use is permitted on the trail during the winter season, weather dependent.		
Current Status	Open year-round	Closed for construction	Closed for construction except during winter shutdown

Examples of Planned Trail Signage

For the comprehensive, stakeholder-created signage plan, see Appendix D of the Historic Preservation Plan found on NYSDEC's website: <https://dec.ny.gov/nature/forests-trees/dec-land-stewardship/rmp-ump/remsen-lake-placid-travel-corridor-ump>

Traffic & Cautionary Signs

Installed along trail are part of construction phases

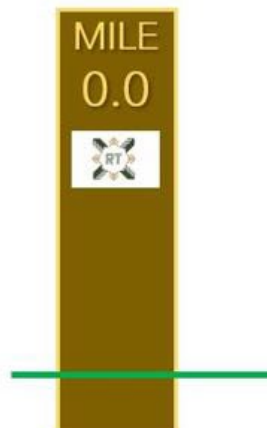


Sample Safety Signs

Installation – ongoing

Emergency Mile Markers

Will be located every ½ mile from Lake Placid to Tupper Lake

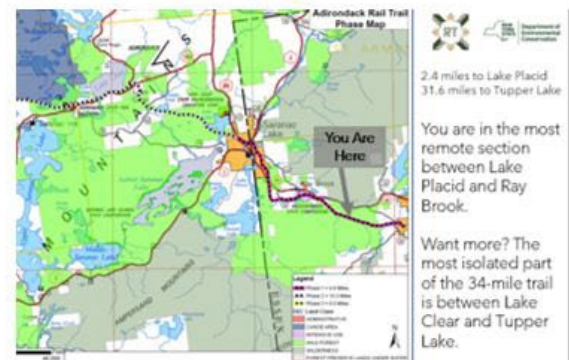


Sample Marker Post

Anticipated Installation – Fall 2024

Interpretive & Informational Kiosks

5 major and 9 minor kiosks planned



Sample Kiosk Panel

Anticipated Installation – Fall 2025

CONTACT INFORMATION

Keith Carrow

Forester 1, Region 5; DLF
New York State Department of Environmental Conservation
 1115 NYS Route 86, Ray Brook, NY 12977
 P: (518) 897-1336 | keith.carrow@dec.ny.gov
www.dec.ny.gov

Kendra Ormerod

Public Participation Specialist 1, Region 5; DCEE
New York State Department of Environmental Conservation
 1115 NYS Route 86, Ray Brook, NY 12977
 P: (518) 897-1239 | kendra.ormerod@dec.ny.gov
www.dec.ny.gov