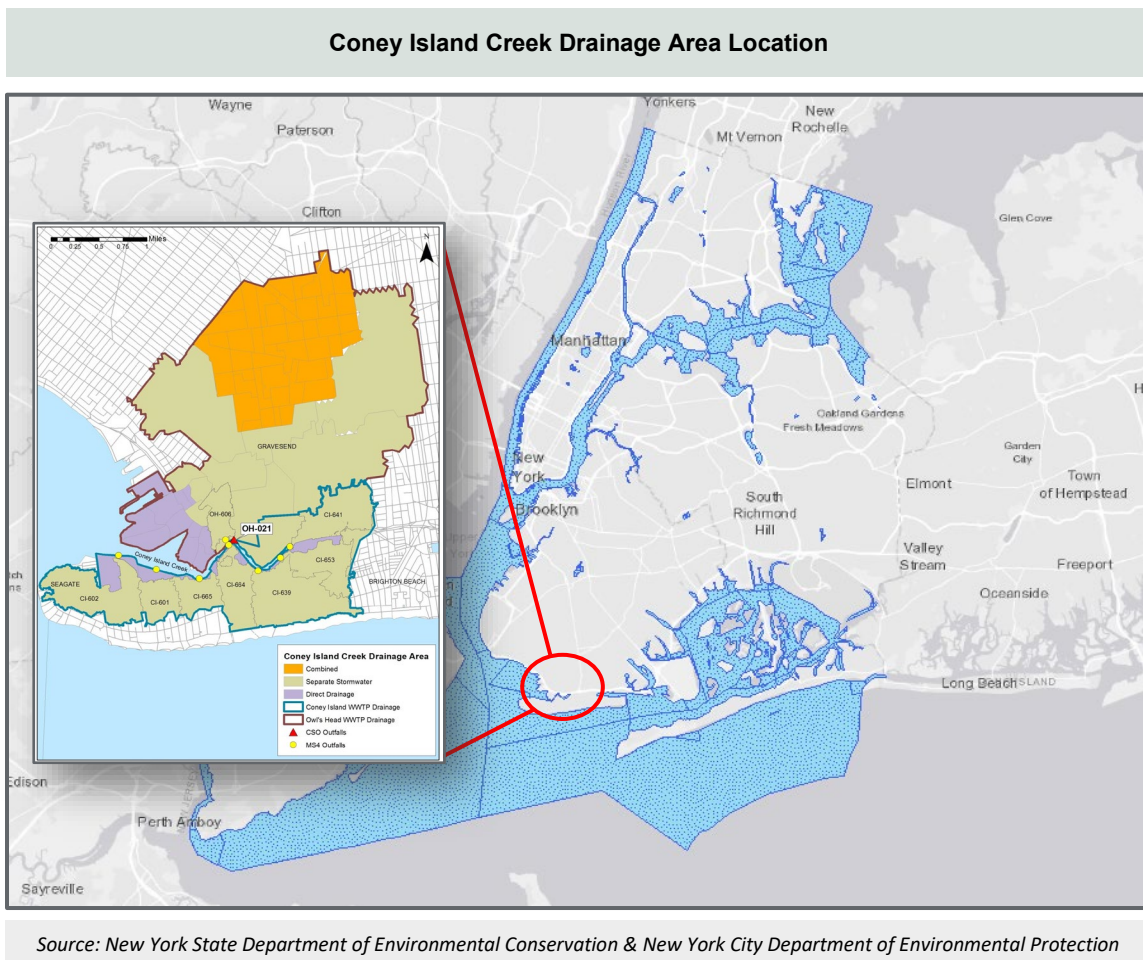


Overview. Pursuant to the NYC CSO Order, the New York City Department of Environmental Protection (DEP) completed watershed-level planning for Coney Island Creek to identify opportunities to reduce combined sewer overflows (CSOs) and improve water quality. To date, DEP has invested approximately \$200 million to reduce CSOs by nearly 90% to the waterbody. The following table shows all watershed plans developed and implemented for Coney Island Creek in accordance with the NYC CSO Order.

Watershed Plan	Date Submitted	Date Approved	Implementation Status
Waterbody/Watershed Facility Plan (WWFP)	June 25, 2007	July 15, 2009	Completed
Long Term Control Plan (LTCP)	June 30, 2016	April 4, 2018	Completed

Waterbody/Watershed Characteristics

Characteristics: Coney Island Creek, a Class I saline waterbody, is a tributary to Gravesend Bay and Lower New York Bay. Its watershed is approximately 3,470 acres; approximately 66 percent is separately sewered and 24 percent is combined sewered. The waterbody has one active CSO outfall, OH-021. Most of the land immediately adjacent to the shoreline is industrial and commercial uses, but overall, the predominant land use in the drainage basin is residential. Class I waterbodies best uses are secondary contact recreation and fishing.



WWFP Projects

WWFP Baseline Conditions: Prior to implementation of any CSO reduction projects, approximately 290 million gallons per year (MGY) of CSO was discharged to Coney Island Creek for an average rainfall year¹. In addition, another 1,487 MGY of stormwater is discharged to the Creek². Under the WWFP baseline conditions, Coney Island Creek did not attain the applicable water quality standards for fecal coliform and dissolved oxygen.

Project Summary: The cost-effective alternative selected from the WWFP was an expansion of the Avenue V pump station from a 30 million gallons per day (MGD) capacity to an 80 MGD capacity along with the construction of two (2) new force mains (42" and 48") to convey additional wastewater and combined sewer flow to the Owls Head Water Resources Recovery Facility. The following table summarizes the project completed to reduce CSO impacts in Coney Island Creek along with their completion date, total cost, and estimated CSO reduction.



Selected Alternatives	Completion Status	Date of Completion	Total Cost at Project Completion	CSO Volume Reduction
Avenue V Pump station expansion and new Avenue V wet weather force main	Completed	October 2012	\$197,031,377	87%



¹ 2008 rainfall year was determined to be the average rainfall year during the LTCP development and for the InfoWorks modeling.

² This waterbody is now classified as an MS4 Priority Waterbody, subject to additional requirements under the New York City's MS4 permit (NY0287640). This permit amongst other things, addresses water quality impacts due to non-CSO stormwater discharges in the creek.

LTCP Projects

LTCP Baseline Conditions: Under the LTCP approximately 75 MGY of CSO was discharged to Coney Island Creek for an average rainfall year³. In addition, another 1,280 MGY of stormwater is discharged to the Creek. Under the LTCP baseline conditions, the waterbody did not attain the applicable water quality standards for fecal coliform and dissolved oxygen. There were no additional CSO reduction projects selected under the LTCP.

Projected Improvements

CSO Reduction: The Avenue V pump station expansion was estimated to reduce CSO discharges to Coney Island Creek by 87%, thereby lowering the CSO discharge at CSO outfall OH-021 from 292 MGY to 37 MGY for an average rainfall year. The Avenue V Pumping Station upgrades have provided significant reductions in CSO discharge since its completion in 2012. The LTCP concluded that 100% control of CSO discharges would not provide tangible improvements to water quality attainment.

Projected Water Quality: For the recreational season (May 1st through October 31st) the waterbody is expected to achieve full attainment for fecal coliform and dissolved oxygen, except at the head end of the Creek.

Post Construction Monitoring

To confirm that the projects implemented achieve the projected water quality improvements post-construction compliance monitoring will be conducted by DEP. DEP conducts ongoing monitoring under its Harbor Survey Monitoring Program.

Long Term Control Plan

If you would like additional information on the Coney Island Creek LTCP, you can access the entire approved LTCP by visiting the New York City CSO Program information page on the [New York State Department of Environmental Conservation Website](#).

³ 2008 rainfall year was determined to be the average rainfall year during the LTCP development and for the InfoWorks Modeling